

# MONTHLY MEMBERSHIP PROGRESS REPORT

LOCATION INDIA

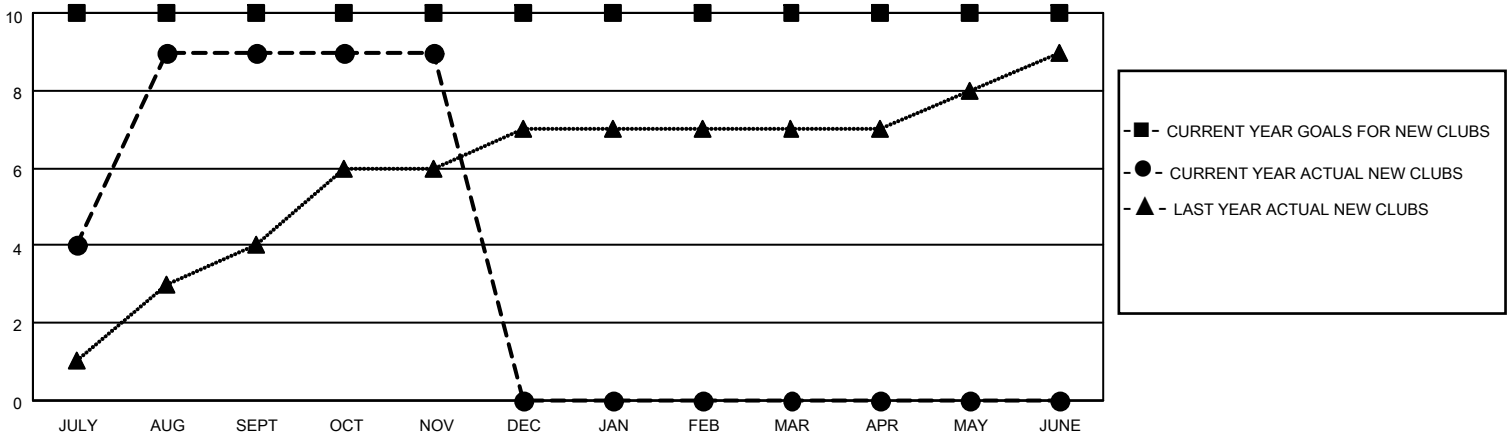
District 322C1

Results as of: 11/30/2022

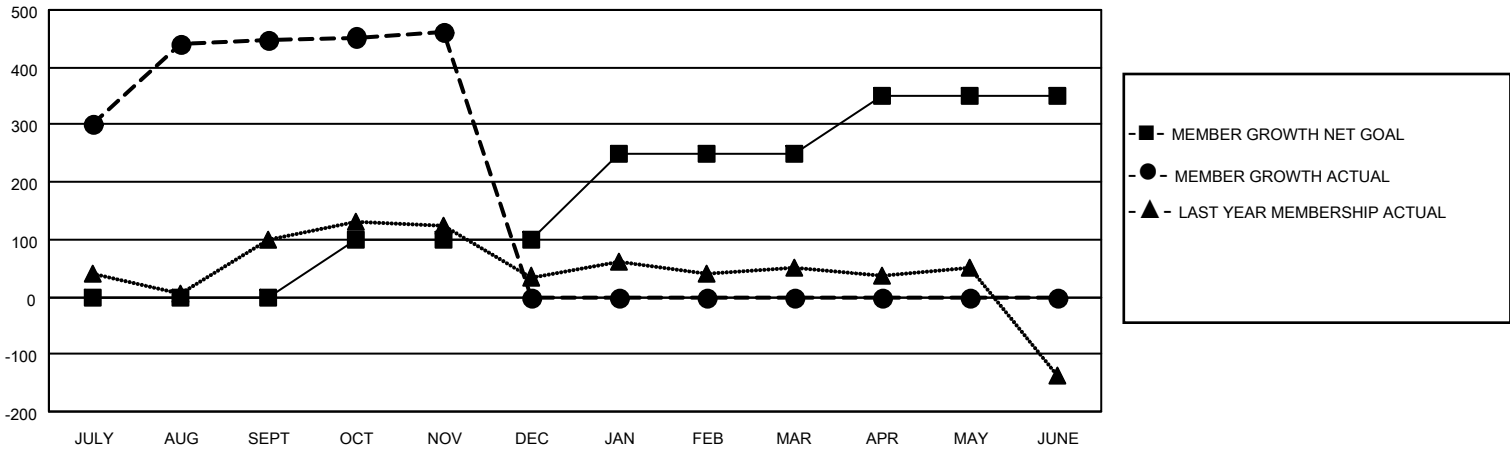
Clubs			
RESULTS FOR 2022-2023			
QUARTER	NEW CLUB GOAL	NEW CLUBS	DROPPED CLUBS
JULY/AUG/SEPT	10	9	1
OCT/NOV/DEC	0	0	0
JAN/FEB/MAR	0	0	0
APR/MAY/JUNE	0	0	0

Members			
RESULTS FOR 2022-2023			
QUARTER	MEMBER GROWTH NET GOAL	MEMBER GROWTH ACTUAL	DROPPED MEMBERS ACTUAL (including transfers)
JULY/AUG/SEPT	0	490	36
OCT/NOV/DEC	100	31	14
JAN/FEB/MAR	150	0	0
APR/MAY/JUNE	100	0	0

**GOALS AND ACTUAL NEW CLUBS CUMULATIVE**



**GOALS AND ACTUAL MEMBERS CUMULATIVE**



**DROPPED CLUBS: 1**

**70 CLUBS OF 122 ADDED 1 OR MORE NEW MEMBERS**

**GENDER DISTRIBUTION**

MALE	2,905 (75.57%)
FEMALE	939 (24.43%)
NON BINARY	0 (0.00%)
PREFER NOT TO ANSWER	0 (0.00%)

**DROPPED MEMBERS**

[CLICK HERE FOR CUMULATIVE MEMBERSHIP DATA](#)

DECEASED	4
CLUB CANCELLED	11
OTHER	35
<b>TOTAL</b>	<b>50</b>

TOTAL FAMILY UNIT MEMBERS 1,977

FAMILY MEMBERS PAYING HALF DUES 1,175